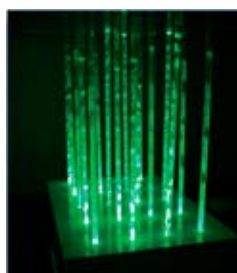
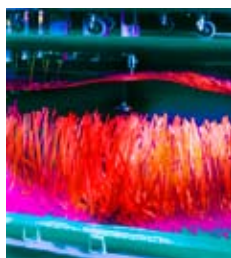


Graduate Research School  
Ground Floor, South Wing,  
Rupert Myers Building  
+61 2 9385 5500  
grs.enquiries@unsw.edu.au



#### In this issue

1. Fulbright Travel Scholarships to US
2. Intellectual Property Seminar
3. Malcolm Chaikin Prize
4. Conference Award Winner
5. Postdoctoral Opportunities Seminar
6. Young Environmentalist of the Year Award
7. Annual Progress Reviews
8. UNSW Works
9. PRSS Funding

## Message from the Dean



**W**elcome to the May edition of Graduate Research News.

I am pleased to confirm that final guidelines for the Postgraduate Research Student Support (PRSS) Scheme will be available on the Graduate Research School web site from 9 May. Further details on the scheme are available later in this newsletter. The PRSS scheme, introduced for the first time in 2007, provides funding to currently enrolled research students, to allow them to present their research at national and international conferences. The application process will be administered thru myUNSW and you will be contacted via your UniMail email account when applications open and directed to the relevant conditions and online application form by email. Please ensure that you regularly access your UniMail account as this email address is used for all official University correspondence.

**T**here are many benefits to attending and presenting your research at conferences. These benefits include the opportunity to meet leading researchers in your field as well as to obtain critical feedback on your research, and to identify potential future employers particularly if you are considering a postdoctoral fellowship after you

complete your degree. If you are considering working overseas and securing a postdoctoral position you need to commence plans at least 12-18 months before you submit your thesis. The Graduate Research School will be hosting Finding Postdoctoral Opportunities later this month providing an overview of the types of fellowships available, how to go about finding a position as well as the perspective from a PhD graduate who has successfully completed postdocs and is now working at UNSW. Please come along if you are thinking about opportunities available to you after your PhD.

Margaret M Harding  
Dean of Graduate Research

### Important Dates & Upcoming Events

- 1 May - **Managing Your Relationship With Your Supervisor** ([Counselling Service](#))
- 7 May - **Understanding Intellectual Property Seminar** ([Graduate Research School](#))
- 20 May - **Finding Postdoctoral Opportunities Seminar** ([Graduate Research School](#))
- 20 May - **Giving Your First Conference Paper** ([Learning Centre](#))
- 21 May - **Literature Review** ([Learning Centre](#))
- 29 May - **Networking for Postgraduate** ([Careers & Employment](#))

## Fulbright Scholarships Now Open – Travel to the United States!

Fulbright Scholarships provide the opportunity for Australian citizens to undertake 8-12 months research in the United States related to their Australian PhD.

Australian PhD students can now stop the clock on their Australian Postgraduate Scholarship (APA, APIA or university based) to undertake international research with a Fulbright Scholarship.

It provides easy and cost effective access to U.S. research institutions – Scholars are welcomed as Visiting Research Fellows. Fulbright Scholars undertaking research do not

- need to sit U.S. university entrance exams;
- apply for admission to the U.S. university;
- \* or pay U.S. university tuition fees.



Scholars arrange affiliation through personal approaches to U.S. researchers, or links their supervisors or universities have with U.S. universities. This also provides the opportunity for Australian universities and research groups to establish or enhance their collaborative links in the United States.

Applications for the 2009 Fulbright Scholarships close 31 August 2008. Scholars can commence their Fulbright program any time between 1 July 2009 and the 30 June 2010.

See [www.fulbright.com.au](http://www.fulbright.com.au) for more information, application forms and stories of Fulbright Scholar's experiences.

## What Are Research Students Intellectual Property Rights? Do You Know?

The Graduate Research School is hosting the seminar 'Understanding Intellectual Property' in May. Guest speakers include the Deputy Vice-Chancellor (Research), Professor Les Field and NewSouth Innovations.

At this seminar, research students will learn about:

- Definition and types of Intellectual Property
- The principles of Intellectual Property and Copyright
- The UNSW Intellectual Property Policy, and the conditions which apply to research students
- Authorship and publishing during your degree
- Commercialising IP

**Date:** Wednesday 7 May

**Time:** 12 – 1:30pm

**Venue:** Hugh Dixon Room, AGSM Building (G27), Upper Campus

**RSVP:** [rsvp.grs@unsw.edu.au](mailto:rsvp.grs@unsw.edu.au) by Tuesday 6 May



DVC Research Prof Les Field



NewSouth Innovations

## Malcolm Chaikin Prize for Research Excellence in Engineering



**C**ongratulations to Dr Neil Yager, winner of the 2008 Malcolm Chaikin Prize for the best thesis passed in 2007.

**T**he purpose of the award is to encourage, reward and celebrate outstanding achievement in research by doctoral students within the Faculty of Engineering. The award reflects the commitment of the University and the Malcolm Chaikin Foundation to encourage, reward and celebrate outstanding achievement in research by doctoral students in any area of research within the Faculty of Engineering.

**C**riteria for the award includes the quality of the thesis, the ability to convey the excitement of Engineering to fellow members of the university and the scientific community as well as raising the profile of Engineering in the community at large.

**D**r Yager who completed his PhD in the School of Computer Science Engineering, will be awarded a Medal and \$10,000 for his thesis titled '*Heirarchial Fingerprint Verification*' and will be delivering a public lecture on his research topic later in the year. Dr Yager is now working as a Research Scientist for Biometix.

## 2008 Conference Award for UNSW Medical Student

**C**ongratulations to Rebecca Mitchell, winner of the Award for best presentation in the area of Advances on Injury Research and Surveillance at the 9th World Conference on Injury Prevention and Safety Promotion held in March this year.

**R**ebecca is a PhD student in the School of Public Health & Community Medicine.



## Start Thinking About Life After Your PhD!

**T**he Graduate Research School is hosting the 'Finding Postdoctoral Opportunities Seminar' in May.

**T**his seminar will provide you with information on the different types of research fellowships available, where to start looking, advice from PhD graduates and fellowship holders, and information from the Careers & Employment Service about addressing selection criteria when applying for research and academic positions.

**Date:** Tuesday 20 May

**Time:** 12 – 1:30pm

**Venue:** Biomedical Theatre D  
Building (E27), Upper Campus

**RSVP:** [rsvp.grs@unsw.edu.au](mailto:rsvp.grs@unsw.edu.au)



## Environment Minister's Young Environmentalist of the Year Award



The Banksia Environmental Foundation has called for nominations in the inaugural

Environment Minister's Young Environmentalist of the Year Award.

Designed to recognise "Outstanding environmental achievement at a national or international level by an Australian individual between 15 and 25 years of age", this award seeks to reward initiatives/research by young Australians that have:

(i) made a major contribution to the environment;

(ii) increased or changed understanding or appreciation of the environment and our place in it now and for a sustainable future; and/or

(iii) provided leadership or inspired others in environmental management or protection.

Details of the Award can be found at: <http://www.banksiafdn.com/index.php?page=340>

If you are interested in being nominated for this award, or nominating a UNSW colleague, please contact Paul Ashworth, for detailed assistance (9385 2011, [p.ashworth@unsw.edu.au](mailto:p.ashworth@unsw.edu.au)). The deadline for nominations is 19 May 2008.

## Annual Progress Reviews

Annual Progress Review Forms were sent to Schools in late April for all research students due a review in Semester 1 2008.

Annual progress reviews provide an opportunity for you, your supervisor/s and your school to review all aspects of your candidature. This includes:

- infrastructure and resources available to you
- your supervisor's role
- the progress of the project and your achievements over the last 12 months (or since last review)
- your goals and milestones until the next review
- your anticipated thesis submission date
- any problems identified (personal, technical or academic) and finding solutions or strategies to deal with these problems.

The progress of most students will be assessed by a review panel usually comprised of three staff members in the School. For some students (e.g. external, fieldwork) attendance at a review meeting on campus may not be possible. These students will be contacted by their Postgraduate Coordinator regarding the appropriate arrangements in the School/Faculty. Your Postgraduate Coordinator can provide you with information on specific review procedures for your School. Further information on annual progress reviews may be obtained from: <http://www.grs.unsw.edu.au/currentstudents/progress.html>

If you have any difficulties completing the form, you should consult your Postgraduate Coordinator.

Confidential advice and/or assistance to address complex issues may be obtained from Iona Reid, Student Liaison Manager, in the Graduate Research School. Contact Iona at: [i.reid@unsw.edu.au](mailto:i.reid@unsw.edu.au) or 9385 6067 to make an appointment.

# UNSWWorks

An initiative of the UNSW Library

UNSWWorks is a repository for UNSW Research outputs. It enhances the value and impact of research by making it more visible and accessible globally. It supports researchers to manage their works efficiently and provides a secure and stable store for research works.

There are many benefits in using UNSWWorks:

- UNSWWorks enables immediate and free worldwide access to your research. It promotes your work, the work of your colleagues, and the work of the University as a whole, which combined raises the profile and impact of all.
- UNSWWorks enables greater exposure of your research through increased visibility and availability, and ensures an international audience that is not limited by a lack of subscriptions to scholarly work.
- UNSWWorks is a secure store for your research publications that also helps you respond to the many requests for full text and publication data.
- UNSWWorks can collate and generate full (or partial) publications listing, representing your academic body of work. These listings can be used for grant applications, promotions applications, and can also be linked to your personal website and/or curriculum vitae.
- UNSWWorks is registered with Google Scholar, which means all your work stored on UNSWWorks will appear as a result when

the relevant search is run using Google.

- UNSWWorks generates both viewing and download statistics, monitoring the popularity and impact of your work.
- UNSWWorks accepts non-traditional research types, such as sound, video and image. There are no restrictions surrounding the types of files you can add to UNSWWorks, and there is no restriction on the number of files you can add as a representation of a single piece of research.
- UNSWWorks can link multiple files to a single piece of research. For example, you may wish to include clinical trial notes with the relevant journal article, or photographs of an exhibition with the exhibition catalogue.
- UNSWWorks accepts unpublished manuscripts and papers which can be archived as 'working papers', and made available to the scholarly community for feedback and discussion.
- In the future, UNSWWorks will be integrated with the University's processes for DEST reporting, meaning less work when it comes to reporting, while generating tangible benefits to all.

Should you require more information, please contact your Outreach Librarian or ask a question at <http://info.library.unsw.edu.au/help>

## Applications for Funding for the Postgraduate Research Student Support Scheme for Conference Travel Opens Monday 2 June

The UNSW Postgraduate Research Student Support (PRSS) Scheme is a new scheme to assist currently enrolled postgraduate research students to attend and present their research at local and international conferences. The Scheme provides successful applicants with up to a maximum of \$3,000 each to support costs for conference attendance in 2008.

Funding may be used to support conference expenses including registration, air-fare, travel, accommodation and living expenses. Eligible students may apply for a minimum amount of \$500 and a maximum amount of \$3,000.

To be eligible for funding, research students must have completed at least two full-time semesters (or part-time equivalent) as at 31st March; be on track for completion within the designated timeframes for their degree; be attending a conference and presenting a paper, poster or exhibition on their research work at the conference; and attending (or have already attended) a conference within the calendar year (i.e. 1 January 2008 - 30 November 2008).

Applications open via MyUNSW on Monday 2 June and close on 7 July 2008. The Graduate Research School will then collate and forward information to your Faculty. Faculties will consider applications on a competitive basis and the Graduate Research School will notify applicants of Faculty decisions and arrange payments.



For further detailed information on the application process, please visit:

<http://www.grs.unsw.edu.au/resources/prss.html>

### GUIDE TO STUDENT TRAVEL AT UNSW

All students travelling on UNSW business/conference need to follow the UNSW Travel Policy and Procedures when booking their travel. If you do not follow the procedure listed on the Graduate Research School website, your PRSS claim for reimbursement may be refused.

The Graduate Research School has outlined a Guide to student travel at UNSW on the following webpage: <http://www.grs.unsw.edu.au/resources/travelguide.html>

If your School or Faculty will be providing you with travel funds you should also confirm if they have any specific additional requirements to the procedure listed on the website.

For further information please visit: <http://www.grs.unsw.edu.au/resources/prss.html>

**Please advise Iona Reid, Student Liaison Manager, in the Graduate Research School of upcoming events including seminars, conferences and any research student achievements or awards for incorporation into 'Graduate Research Student News' and our News and Events website listing.**

9385 6067 [i.reid@unsw.edu.au](mailto:i.reid@unsw.edu.au)